



# ENDOSCOPY PRODUCTS



# ENDOSCOPY PRODUCTS

## SECTION 1. | Endoscope Transport and Protection

Oasis® Scope Transport Tray.....	1
Oasis® Dispensing, Collection and Transport.....	2
Kangaroo Scope Transport Pad .....	3
Soiled Scope Bag .....	4
TravelKit .....	4
Foot Pedal Cover.....	4
Endoscope Tip Guard .....	4
Non-Absorbent Scope Bumper.....	4
Countdown Scope Tags .....	4

## SECTION 2. | Manual Cleaning – Bedside

First Step Flexible Endoscope Bedside Kits.....	5 – 6
Draco Deep-Cleaning Pads .....	7 – 8
Gemini Twin Cleaning Pads.....	8
Tubular Cleaning Pads.....	8
Krinkle Cleaning Pad .....	8

## SECTION 3. | Manual Cleaning – Decontamination

Simple2 Enzymatic Detergent   Endopack Pre-Clean Kits .....	9
Disposable Endoscopic Channel Brushes   Valve Brush   Button Brush.....	10
Dragontail Endoscopic Pull-Through Channel Brushes.....	11
Clear Path Microfiber Wipers .....	11
Caterpillar Pull-Through Endoscopic Channel Brushes .....	12

Cygnus Medical Products are Latex-Free



## Oasis® PLUS Scope Transport Tray

All the benefits of the Oasis Transport Tray now available in a larger size without the cleaning solution reservoir.

SKU	DESCRIPTION	SIZE	UNITS/CASE
OP1330	Oasis PLUS Biodegradable Tray with Reversible OR Lid.	21.5" x 19.5"	30 Trays 30 Lids



## Single-Use Rigid Containment

Lapses in the cleaning of reusable endoscope transport trays can lead to cross-contamination in the surgical work area. Bedside cleaning is performed within the Oasis Tray, keeping residual run-off contained. The Oasis Scope Transport Tray offers an economical single-use alternative that protects both patients and staff from contamination and infection.

Oasis and Oasis PLUS Trays are Latex-Free.



Single-Use and disposable.



Made of a biodegradable plant-based material.



Space efficient, stackable and nestable.



## Oasis® Scope Transport Tray

Rigid construction protects delicate scopes, while the reversible lid clearly differentiates clean and soiled scopes. Oasis Trays have a unique built-in 500 ml cleaning solution reservoir for post-procedure suctioning and flushing.

SKU	DESCRIPTION	SIZE	UNITS/CASE
OT1230	Oasis Biodegradable Tray with Reversible OR Lid.	20.5" x 16.5"	30 Trays 30 Lids



## Oasis® and Oasis® PLUS Dispensing and Collection



### Oasis and Oasis PLUS Dispensing Dolly

Load clean nested trays in the Oasis Dispensing Dolly. The cart features a stainless steel base, 50 tray capacity with lid shelf, removable prep table top, non-marking swivel casters. Dolly color – green.



### Oasis and Oasis PLUS Collection Unit

Safely dispose of soiled trays in the Oasis Collection Unit. The unit features a stainless steel base, non-marking swivel casters. Unit color - red.

### Biodegradable Liners

Clear plastic liners sized for the Oasis Collection Unit.



SKU	DESCRIPTION	SIZE	UNITS/CASE
DD40-G	Oasis/Oasis PLUS Dispensing Dolly, color-green.	23"W x 21"D x 36"H	1

SKU	DESCRIPTION	SIZE	UNITS/CASE
CU10-R	Oasis/Oasis PLUS Collection Unit, color – red.	23"W x 21"D x 36"H	1
4325	Biodegradable Liners	45 Gallon	200 Liners

## Oasis® and Oasis® PLUS Transport Carts

All transport carts are available in both **green/Clean** and **red/Soiled**.



TC04-G



TC06-R

### Oasis and Oasis PLUS Transport Carts are available 4, 6 or 8 tray capacities.

Oasis Trays fit perfectly in the Oasis Transport Cart for secure and easy transport. All carts are available in green (clean scope cart) and red (soiled scope cart) with non-marking swivel caster wheels.

SKU	DESCRIPTION	SIZE	UNITS/CASE
TC04-G	4 tray Oasis/Oasis PLUS Transport Cart, color – green.	23"W x 21"D x 32"H	1
TC04-R	4 tray Oasis/Oasis PLUS Transport Cart, color – red.	23"W x 21"D x 32"H	1
TC06-G	6 tray Oasis/Oasis PLUS Transport Cart, color – green.	23"W x 21"D x 44"H	1
TC06-R	6 tray Oasis/Oasis PLUS Transport Cart, color – red.	23"W x 21"D x 44"H	1
TC08-G	8 tray Oasis/Oasis PLUS Transport Cart, color – green.	23"W x 21"D x 56"H	1
TC08-R	8 tray Oasis/Oasis PLUS Transport Cart, color – red.	23"W x 21"D x 56"H	1
TP-50	Transport Cart Top Cover	23"W x 21"D	1



Lay the Kangaroo Pad on a flat surface, blue absorbent pad side up, plastic side down. Place the endoscope in the center of the pad.



Fold both of the clear plastic flaps into the center, over the endoscope.



Drawstring

Drawstring



Pull the drawstrings located on the left and right sides of the pad to form a bag.

## kangaroo<sup>TM</sup>

### Scope Transport Pad

**Protect endoscopes from damage while protecting staff and patients from infection.**

The Kangaroo Scope Transport Pad is both a 41" x 36" table cover and a soiled scope containment bag. When used as a table cover, the Pad's inner absorbent layer helps to keep the work area clean, preventing cross-contamination and protecting both patients and staff from infection. By pulling the drawstrings placed on each end, the Kangaroo Pad converts from a table cover to a soiled scope containment bag.

Order#: 0434N  
Size: 41" x 36"  
Units / Case: 100 Pads

The bag is closed and the scope is ready for transport.





### Soiled Scope Bag

Clearly identifies soiled scopes. Prevents a soiled scope from being handled as a clean scope. Protects hospital staff and patients from cross-contamination. White bag with orange/red printing. Single-use and latex-free.

Order#: SB24

Size: 24" x 24"

Units / Case: 100 Bags



### TravelKit™

A 200 ml First Step Kit and Soiled Scope Bag in one convenient kit. Everything needed for endoscope bedside cleaning and endoscope transport. Single-use and latex-free.

Order#: TK200

Size: EP-4 Kit (200 ml) and

24" x 24" Soiled Scope Bag

Units / Case: 50 Kits



### Foot Pedal Cover

Made of clear poly lining with an elastic sleeve. Protects the foot pedal from cross-contamination and damage caused by fluids. Single-use and latex-free.

Order#: FP1412

Size: 14" x 12"

Units / Case: 50 Covers



### Endoscope Tip Guard

Protect the endoscope tip from damage and costly repairs. Single-use and latex-free.

Order#: 1500TG

Size: 1 1/4" x 5"

Units / Case: 100 Guards



### Non-Absorbent Scope Bumper

Unlike open cell foam bumpers, the Non-Absorbent Scope Bumper does not capture or hold residual moisture that could lead to the formation of bacteria colonies. Single-use and latex-free.

Order#: NA2500

Size: 1 5/8" x 3"

Units / Case: 200 Bumpers



### Countdown™ Scope Tag

Alert hospital staff about endoscope reprocessing expiration dates. Made of waterproof synthetic paper. Single-use and latex-free.

Order#: CD300

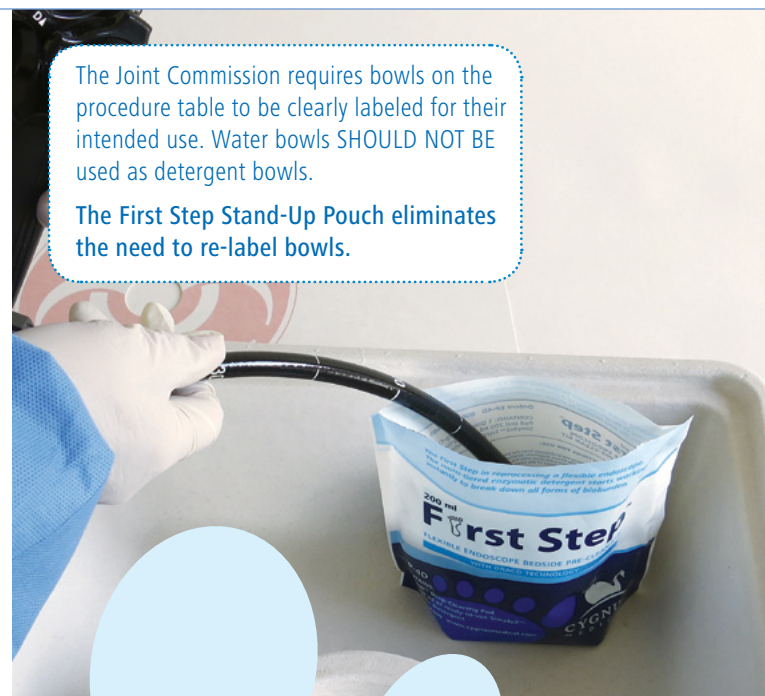
Size: 12" x 1.75"

Units / Case: 200 Tags (2 packs of 100)



The Joint Commission requires bowls on the procedure table to be clearly labeled for their intended use. Water bowls SHOULD NOT BE used as detergent bowls.

The First Step Stand-Up Pouch eliminates the need to re-label bowls.



# First Step™

## Flexible Endoscope Bedside Kit

### Immediate bedside cleaning.

The First Step Bedside Kit simplifies the cleaning process, and provides the supplies needed to prevent bioburden from drying and solidifying in the channel.

- 100% compliant with SGNA and manufacturers' guidelines
- Safe for use on all flexible endoscopes
- Available with a variety of cleaning pads
- First Step Pouches are user-friendly and space-efficient
- Ensures the proper dilution of enzymatic detergent
- Available in 100 ml, 200 ml and 500 ml sizes

### Ready-To-Use First Step Kits

Convenience of use increases staff compliance and turnover time. The ready-to-use detergent ensures a properly mixed formula every time. The combined effect is 100% compliance, 100% of the time.

### From the SGNA Standards of Infection Control in the Reprocessing of Flexible Gastrointestinal Endoscopes:

"Immediately after removing the scope from the patient, wipe the insertion tube down with a lint-free cloth or sponge soaked in a freshly-prepared enzymatic detergent solution (cloth should be single-use, or high-level disinfected, or sterilized between cases). Place the distal end of the endoscope into the appropriate detergent solution and suction a large volume of detergent solution through the endoscope until clear. Finish by suctioning air."

### The Add Water First Step Kit

The Add Water Kit contains concentrated Simple2 Multi-Tiered Enzymatic Detergent in a convenient stand-up pouch.

All First Step Kits contain Simple2™ Multi-Tiered Enzymatic Detergent. Simple2 effectively dissolves blood, fat, tissue, protein and most other forms of organic material. Simple2 is low-foaming, non-toxic, non-corrosive, latex-free, neutral pH and safe to use on all flexible endoscopes.



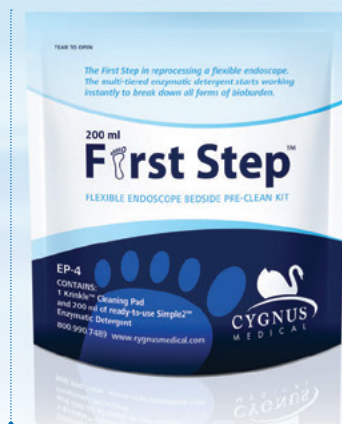


## The Ready-to-Use First Step Kit

Includes pre-diluted Simple2 Enzymatic Detergent and an endoscopic cleaning pad.



SKU	OPTIONS	SIZE	UNITS/CASE
EP-3	Endoscopic Cleaning Pad	100 ml	100 Kits



SKU	OPTIONS	SIZE	UNITS/CASE
EP-4	Endoscopic Cleaning Pad	200 ml	70 Kits
EP-4B	EP4 Kit and a Button Brush	200 ml	70 Kits
EP-4D	Draco Pad	200 ml	70 Kits
EP-4G	Gemini Pads	200 ml	70 Kits



SKU	OPTIONS	SIZE	UNITS/CASE
EP-6	Endoscopic Cleaning Pad	500 ml	30 Kits

## The First Step Add Water Kit

Includes concentrated Simple2 Enzymatic Detergent and a cleaning pad in a resealable stand-up pouch.

Add water to the Kit when you are ready to use it. The concentrated detergent can be diluted in the pouch, no additional mixing container is required. The Add Water Kit maximizes storage space and reduces freight costs.



SKU	OPTIONS	SIZE	UNITS/CASE
EP-6W	Endoscopic Cleaning Pad	500 ml	120 Kits



### Tabletop Kit Holders

Order#: FS74  
Size: 7"x 4"

Order#: FS94  
Size: 9"x 4"

Keep Kits within reach.



### Wall Rack

Order#: WR95M  
Size: 12"h x 7"w x 7"d



## Detach, capture and remove biofilm with Draco Technology.

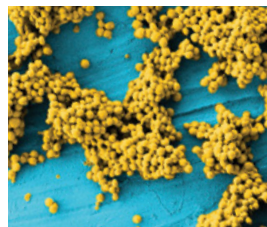
### Draco deep-cleaning removes more biofilm.

Healthcare facilities are finding it difficult to clean biofilm from endoscopes and other surgical instruments. As biofilm colonies develop, the extreme stickiness of the extracellular polymeric substance (EPS) matrix makes them very difficult to remove. Enzymatic detergents alone are not able to remove these colonies. Technologically advanced microfiber and cleansing foam enable the Draco Pad to remove biofilm by first detaching colonies with the deep-cleansing foam layer, and then capturing and removing colonies with the Draco Pad's split microfiber layer.

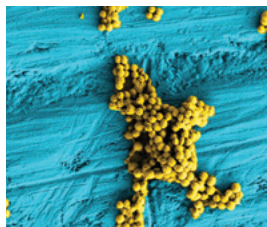
- **Non-abrasive deep-cleansing foam layer** – engineered for extreme scrubbing at a microscopic level. Safe for use on delicate optics.
- **Split microfiber layer** – captures microscopic particles as small as 4 microns.
- **Inner contour foam layer** – allows the pad to easily wrap around endoscopes for thorough cleaning.

### The results are in...

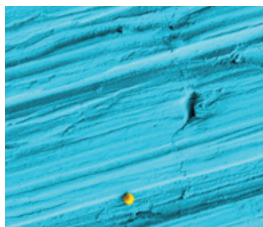
In a comparative test study performed at the Center for Biofilm Engineering at Montana State University, the Draco Pad was shown to remove considerably more MRSA biofilm than competing products.



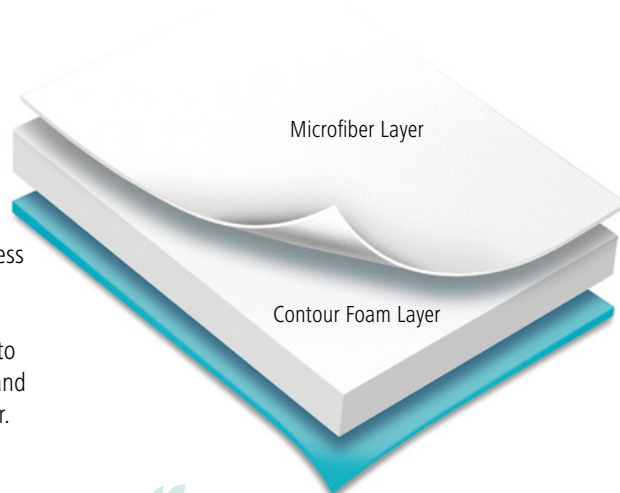
Control



Traditional Urethane Pad  
Log Reduction – 0.63



Draco Deep-Cleaning Pad  
Log Reduction – 3.74



**draco**<sup>TM</sup>  
Deep-Cleaning Pad

### The test Indicated:

The Draco Pad removed biofilm much more effectively than the urethane pad.







HY0305Z

Scrubbing Foam  
Layer

Draco Microfiber  
Layer

## Draco™ Deep-Cleaning Pads

Draco Pads effectively remove adhered contaminants on flexible endoscopes and stainless steel surgical instruments. The Draco scrubbing layer breaks the bonds that adhere biofilm clusters to surfaces. The Draco microfiber layer then captures and removes these harmful pathogens.

SKU	DESCRIPTION	SIZE	UNITS/CASE
HY0305	Draco Pad	3.5" x 5"	100 Pads
HY0305Z	Draco Pad with Ready-to-Use Enzymatic Detergent	3.5" x 5"	100 Pads



## Gemini™ Twin Cleaning Pads

Two interlocking Pads packaged together. One Gemini Pad is used to wipe down the scope during manual cleaning at the patient's bedside and then discarded. The second Gemini Cleaning Pad is designed to protect the endoscope during transport to the decontamination room where it can then be used to further wipe down and clean the endoscope.

SKU	DESCRIPTION	SIZE	UNITS/CASE
GP120	Gemini Pads*	4" x 3"	120 Packs
GP120Z	Gemini Pads* with Enzymatic Detergent**	4" x 3"	120 Packs

\*2 Pads per Pack

\*\*Mix with 500 ml of water.

FLZ3000



## Cleaning Pads for Endoscopy

### Tubular Sponge

A dual-function endoscopic sponge, designed to mirror the contour of a flexible endoscope. The Tubular Sponge is not only a cleaning sponge, but it can help protect the endoscope during transport to the decontamination room.

SKU	DESCRIPTION	SIZE	UNITS/CASE
2000FL	Tubular Pad	3.5" x 2" Diameter	100 Pads
2000FLZ	Tubular Pad with Enzymatic Detergent*	3.5" x 2" Diameter	120 Pads
3000FLZ	Tubular Pad with Ready-to-Use Enzymatic Detergent	3.5" x 2" Diameter	100 Pads

\*Mix with 500 ml of water.



### Krinkle™ Cleaning Pads

The Krinkle Pad's ergonomic shape and contoured ridges help to remove gross contamination.

SKU	DESCRIPTION	SIZE	UNITS/CASE
3550K	Krinkle Pad	3.5" x 5"	200 Pads



# Simple2™

## Multi-Tiered Enzymatic Detergent

**Safe to use on all flexible endoscopes.**

A multi-enzyme solution that effectively dissolves blood, fat, protein, tissue and other organic proteinaceous materials. Simple2 is low-foaming, non-toxic, non-corrosive, latex-free, and neutral pH.

### ED-1

Simple2 Enzymatic Detergent.

**Size:** 1 Gallon

**Units/Case:** 4 Containers

### ED-2

Simple2 Enzymatic Detergent.

**Size:** 2.5 Gallon

**Units/Case:** 2 Containers

### ED-5

Simple2 Enzymatic Detergent.

**Size:** 5 Gallon

**Units/Case:** 1 Container

### FL5000

Water Fill-Line Sticker

**Size:** 1" x 3"

**Units/Package:** 10 Stickers



# ENDOPACK™

## Endoscopic Pre-Clean Kit

Everything necessary to pre-clean endoscopes.

Simple2 Enzymatic Detergent and an endoscopic cleaning pad in a convenient peel open pack. The Kit's Simple2 Detergent is available in 2 concentrations. Choose between Kits with small, large or extra-large Caterpillar Brushes. All the Kit configurations are listed in the table below:

SKU	DESCRIPTION	SIZE	UNITS/CASE
EP1-3G	Endopack Kit Simple2 Enzymatic Detergent and an Endoscopic Cleaning Pad	3 Gallon Dilution	100 Kits
EP1-5G	Endopack Kit Simple2 Enzymatic Detergent and an Endoscopic Cleaning Pad	5 Gallon Dilution	100 Kits
EP90-3G	Endopack Kit 1 Small Caterpillar Brush	3 Gallon Dilution	50 Kits
EP90-5G	Endopack Kit 1 Small Caterpillar Brush	5 Gallon Dilution	50 Kits
EP90-5GB	Endopack Kit 1 Small Caterpillar Brush with Button Brush	5 Gallon Dilution	50 Kits
EP190-3G	Endopack Kit 1 Large Caterpillar Brush	3 Gallon Dilution	50 Kits
EP190-5G	Endopack Kit 1 Large Caterpillar Brush	5 Gallon Dilution	50 Kits
EP190-5GB	Endopack Kit 1 Large Caterpillar Brush with Button Brush	5 Gallon Dilution	50 Kits
EP230-3G	Endopack Kit 1 Extra-Large Caterpillar Brush	3 Gallon Dilution	50 Kits
EP230-5G	Endopack Kit 1 Extra-Large Caterpillar Brush	5 Gallon Dilution	50 Kits
EP230-5GB	Endopack Kit 1 Extra-Large Caterpillar Brush with Button Brush	5 Gallon Dilution	50 Kits



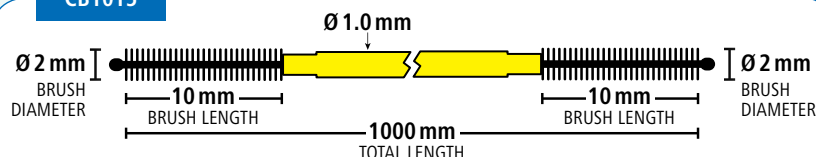


# Disposable Endoscopic Channel Brushes

Single-Use and disposable channel cleaning brushes.

Cygnus Medical offers a variety of endoscopic channel cleaning brushes designed to meet your endoscope reprocessing demands. Nylon bristles clean efficiently and are safe for use in endoscope channels.

## CB1015



## CB1015

**Disposable Endoscopic Channel Brush**

**Compatible Channel Sizes:** 1.0 mm – 1.5 mm

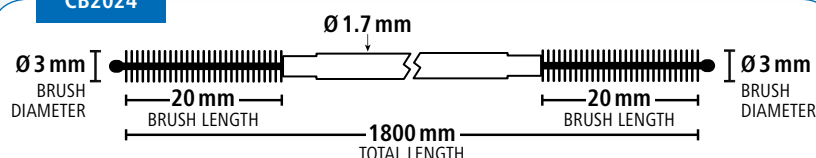
**Brush Diameter:** 2 mm

**Brush Length:** 10 mm

**Total Length:** 1000 mm

**Units per Case:** 50 Brushes

## CB2024



## CB2024

**Disposable Endoscopic Channel Brush**

**Compatible Channel Sizes:** 2.0 mm – 2.4 mm

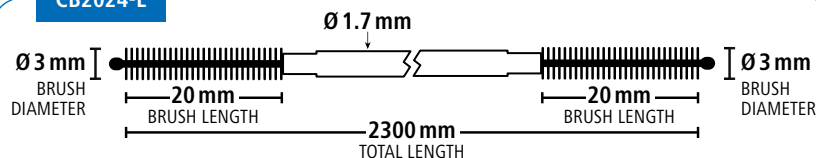
**Brush Diameter:** 3 mm

**Brush Length:** 20 mm

**Total Length:** 1800 mm

**Units per Case:** 50 Brushes

## CB2024-L



## CB2024-L

**Disposable Endoscopic Channel Brush**

**Compatible Channel Sizes:** 2.0 mm – 2.4 mm

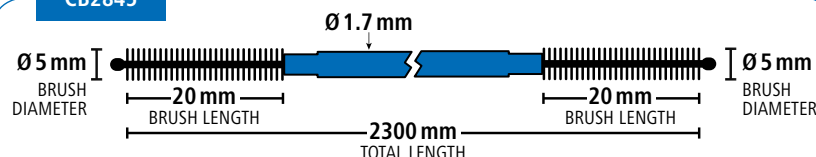
**Brush Diameter:** 3 mm

**Brush Length:** 20 mm

**Total Length:** 2300 mm

**Units per Case:** 50 Brushes

## CB2845



## CB2845

**Disposable Endoscopic Channel Brush**

**Compatible Channel Sizes:** 2.8 mm – 4.5 mm

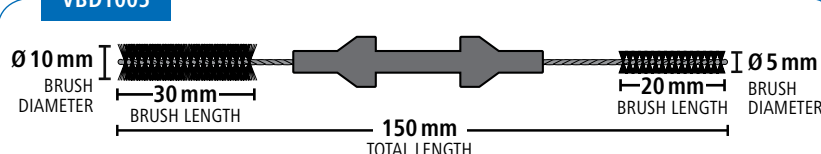
**Brush Diameter:** 5 mm

**Brush Length:** 20 mm

**Total Length:** 2300 mm

**Units per Case:** 50 Brushes

## VBD1005



## VBD1005

**Disposable Double-Ended Valve Brush**

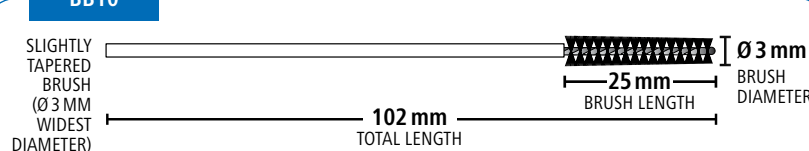
**Brush Diameters:** 10 mm and 5 mm

**Brush Lengths:** 30 mm and 20 mm

**Total Length:** 150 mm

**Units per Case:** 50 Brushes

## BB10



## BB10

**Bristle Button Brush**

**Brush Diameter:** 3 mm

**Brush Length:** 25 mm

**Total Length:** 102 mm

**Units per Case:** 100 Brushes

(25 Units per Bag, 4 Bags per Case)

All brush diagrams are for information only. Not drawn to scale.



## Microfiber Endoscopic Channel Brushes

**Advanced microfiber technology removes contamination at a microscopic level.**

The Dragontail Channel Brush offers a revolutionary approach to cleaning flexible endoscopes and other cannulated surgical instruments. The Dragontail cleaning element is constructed of multiple lint-free Draco™ Microfiber strands, able to capture particles at a 4 micron level. Unlike bristles or silicone discs, which glide over adhered contamination, the microfiber cleaning element detaches, captures and removes gross contamination.

SKU	DESCRIPTION	LEADER SIZE	CHANNEL SIZE	UNITS/CASE
DT2022	Dragontail Brush	110 cm	2.0 – 2.2 mm	100 Brushes
DT2832	Dragontail Brush	230 cm	2.8 – 3.2 mm	100 Brushes
DT3542	Dragontail Brush	230 cm	3.5 – 4.2 mm	100 Brushes



## Disposable Microfiber Wipers | Sterile Microfiber Wipers



Capture residue and particulates at a microscopic level. Clear Path Single-Use Disposable Wipers use split microfiber technology to capture spores and other viable pathogens at a microscopic level. They can be used with any brand of surface disinfectant. Clear Path Microfiber Sterile Wipers are made of woven microfiber fabric and have heat-sealed edges for lint-free cleaning.

SKU	DESCRIPTION	SIZE	UNITS/CASE
W5412 – 30	Clear Path Disposable Microfiber Wipers 30 Wipers per Waterproof Dispenser Pack – 20 Packs per Case.	8" x 12"	600 Wipers
FS4200	Sterile Lint-Free Microfiber Wipers 10 Wipers per Pack – 10 Packs per Case.	9" x 9"	100 Wipers





More bristles,  
more cleaning power.

# Caterpillar™

## Pull-Through Endoscopic Channel Brushes

- Most “push-through” style channel brushes are very passive and lack friction. Most have fewer than 600 bristles.
- The Caterpillar Brush’s “pull-through” design and 80,000 bristles drastically increases the amount of friction and cleaning action.

SKU	DESCRIPTION	LEADER SIZE	CHANNEL SIZE	UNITS/CASE
CAT-2	Small Caterpillar Channel Brush	90 cm Leader	2.0 – 2.2 mm	100 Brushes
CAT-2B	Small Caterpillar Channel Brush with Button Brush	90 cm Leader	2.0 – 2.2 mm	100 Brushes
CAT-2L	Small Caterpillar Channel Brush (Long Leader)	110 cm Leader	2.0 – 2.2 mm	100 Brushes
CAT-2BL	Small Caterpillar Channel Brush with Button Brush (Long Leader)	110 cm Leader	2.0 – 2.2 mm	100 Brushes
CAT-1	Large Caterpillar Channel Brush	198 cm Leader	2.8 – 4.5 mm	100 Brushes
CAT-1B	Large Caterpillar Channel Brush with Button Brush	198 cm Leader	2.8 – 4.5 mm	100 Brushes
CAT-3	Extra-Large Caterpillar Channel Brush	230 cm Leader	2.8 – 4.5 mm	100 Brushes
CAT-3B	Extra-Large Caterpillar Channel Brush with Button Brush	230 cm Leader	2.8 – 4.5 mm	100 Brushes



965 West Main Street  
Branford, CT 06405  
Phone: 800.990.7489  
Fax: 203.764.1858  
Email: [sales@cygnusmedical.com](mailto:sales@cygnusmedical.com)  
[www.cygnusmedical.com](http://www.cygnusmedical.com)

Cygnus Medical National Repair Facility:  
7 Kulick Road, Fairfield, NJ 07004  
973.882.3300

CURRENT VERSIONS:  
PRINT – 04/25/17 REV7  
DIGITAL – 04/29/17